

Taylor **“Big Red”**

THC Series Cushion Tire Lift Trucks



THC-300S



THC-400L

Features:

- Hydrostat Transmission and LP Engine options are available on some models
- Cummins Turbocharged diesel engines are standard
- One-piece, flip down instrument panels
- 12-volt electrical systems, 100 amp alternators
- 3-speed, fully reversing, modulated, powershift transmissions with inching control and electric shift control
- Heavy-duty, planetary drive axles
- Steer axles with a single, double action, improved steer cylinder completely protected in the axle housing
- Hydrostatic power steering
- All-welded frames have integral counterweights
- 2-stage telescopic, direct lift mast with free lift or 3-stage telescopic lift cylinder.
- Heavy-duty battery and alternator

24-in. Load Center Models:
THC-250S / THC-300S
30-in. Load Center Models:
THC-400L / THC400LO / THC-500L (Coil Ram Only)



THC-400L



Spacious operator's stations



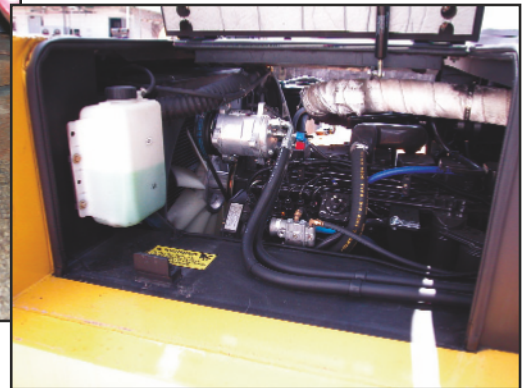
Operator visibility



Gull-wing hood allows for easy service access to engine compartment and swing-out battery.



Steer cylinder is completely protected in axle housing.



TIER Certified Turbocharged Diesel Engine

Standard Equipment THC-250S/300S/400L/500L

THC-250S / 300S Cummins QSB 4.5-C130 TIER III Turbocharged Diesel Engine • THC-400L / 500L Cummins QSB 6.7-C160 TIER III Turbocharged Diesel Engine • Lockable Fuel Cap w/Strainer • Donaldson Dry-type Air Cleaner w/Safety Element and Restriction Indicator • Muffler w/Stack Guard • 12-Volt Electrical System w/100 Amp Alternator • Heavy-duty Battery • Anti-restart Ignition Switch • Tilt Steering • Lighted Instruments • Electric Horn • Keyswitch-actuated Amber Strobe Light • Reverse-actuated Backup Alarm • Forward Alarm • Rear View Mirrors • Transmission - 3 speed w/Inching, Modulated, Electric Shift Control • Taylor Steer Axle • Planetary Drive Axle • Air Brakes • Hydrostatic Power Steering • Pilot Operated Controls • Center Mount Operator Station and Overhead Guard w/Skyview Window and Rear Windshield • Adjustable Vinyl Covered Mechanical Suspension Seat w/Flip-down, Adjustable-angle Arm Rests and Seat Belt • Hydraulic Strainers and Filters in Tank • Accumulator in Lift Circuit • THC-250S/300S: 96" Telescopic Direct Lift Mast w/40" Free Lift, Type C Carriage 58" wide, 3"x8"x48" Forks • THC-400L: 96" Telescopic Direct Lift Mast w/48" Free Lift • Type C Carriage 65" Wide • 3.5" x 8" x 60" Forks • Tires: (Drive) THC-250S & THC-300S 28x16x22 Poly / THC-400L & THC-500L 36x20x30 Poly • Tires: (Steer) THC-250S 22x9x16 Poly - THC-300S 22x10x16 Poly / THC-400L & THC-500L 28x12x22 Poly



TAYLOR MACHINE WORKS, INC.

650 North Church Avenue

Louisville, Mississippi 39339-2017

(662) 773-3421 / Fax (662) 773-9146

www.taylorbigred.com



“Big Red” THC-500L

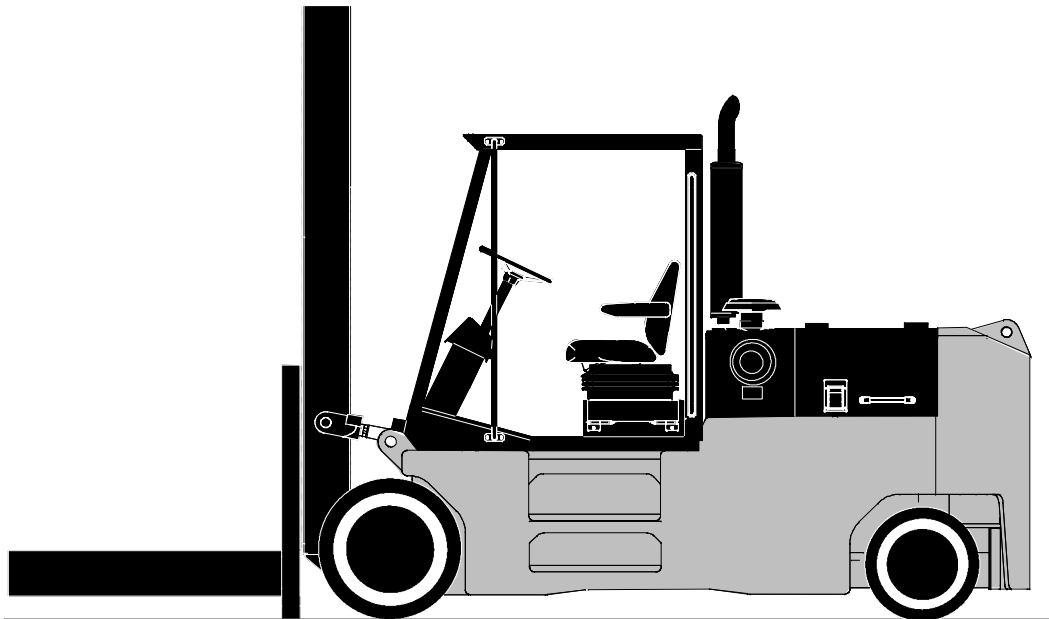
Taylor Cushion Tire Industrial Truck Standard Specifications

THC-500L

Rated Capacity 50,000-lbs. (22,680 kg)

30-in. (762 mm) Load Center

110-in. (2,794 mm) Wheelbase

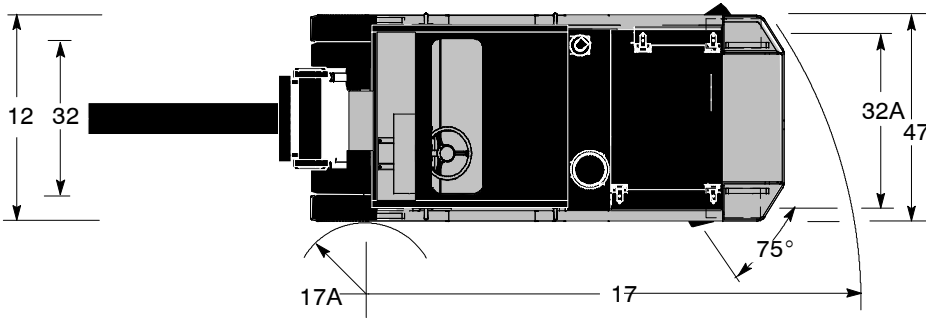


“Big Red” THC-500L

| | | | | | |
|----------------------|------|----------------------------|---|------------------------------|-------------|
| GENERAL | 1 | Manufacturer | Manufacturer's Name | TAYLOR | |
| | 2 | Model | Manufacturer's Designation | THC-500L | |
| | | | | English | Metric |
| | 3 | Capacity | Rated Capacity lb (kg) | 50,000 | 22,680 |
| | 4 | Load Center | Distance in (mm) | 30 | 762 |
| | 5 | Power Type | LPG, Or Diesel | Diesel | |
| | 6 | Tire Type | Cushion, Pneumatic Front / Rear | Cushion / Cushion | |
| DIMENSIONS | 7 | Wheels | Number (X = Driven) Front / Rear | 2X / 2 | |
| | 8 | Upright Lift | Lift - Min / Max (Top Of Ram) in (mm) | 22 / 92 | 559 / 2,337 |
| | 8A | | Free Lift in (mm) | 65 | 1,651 |
| | 9 | Ram | Outside Diameter in (mm) | 12 | 305 |
| | 9A | | Length in (mm) | 48 | 1,219 |
| | 10 | Tilt Angle | Standard Upright - Forward / Backward deg.° | 10 / 10 | |
| | 11 | Overall Dimensions | Length To Face Of Ram in (mm) | 158 | 4,013 |
| | 12 | | Width (Standard Tires) in (mm) | 70 | 1,778 |
| | 13 | | Height, Standard Upright Lowered in (mm) | 147 | 3,734 |
| | 14 | | Height, Standard Upright Extended (Top Of Carriage) in (mm) | 152 | 3,861 |
| | 15 | | Height To Top Of Counterweight in (mm) | 62.25 | 1,581 |
| | 16 | | Height To Top Of Overhead Guard in (mm) | 105.5 | 2,680 |
| | 17 | Turning Radius | Minimum Outside in (mm) | 151.75 | 3,855 |
| | 17A | | Minimum Inside in (mm) | 16.8 | 427 |
| | 18 | Load Distance | Center Of Wheel To Face Of Forks in (mm) | 24 | 610 |
| | 19 | Aisle Width | (Add Load Length For 90° Stacking) in (mm) | 182.6 | 4,638 |
| PERFORMANCE | 20 | Stability | Comply With ANSI? | Yes | |
| | 21 | Speeds | Travel Speed - Maximum Forward mph (km/h) | 9.7 | 15.6 |
| | 22 | | Lift Speed - No Load fpm (m/s) | 25 | .13 |
| | 22A | | Lift Speed - With Load fpm (m/s) | - | - |
| | 23 | | Lowering Speed - No Load / With Load fpm (m/s) | 45 | .23 |
| | 24 | Drawbar Pull | Powershift (Maximum At Stall) lb (kN) | 26,850 | 119 |
| | † 25 | Gradeability | Powershift (Maximum At Stall) No Load % | 24.7 | |
| WEIGHT | 25A | | Powershift (Maximum At Stall) With Load % | 26.5 | |
| | 26 | Ttl. Apprx. Wt. | Standard Truck lb (kg) | 55,000 | 24,948 |
| | 27 | Axle Loading | Static With Rated Load - Front lb (kg) | 97,000 | 43,999 |
| | 27A | | Static With Rated Load - Rear lb (kg) | 8,000 | 3,629 |
| | 27B | | Static With No Load - Front lb (kg) | 22,250 | 10,093 |
| | 27C | | Static With No Load - Rear lb (kg) | 32,750 | 14,855 |
| WHEELS / TIRES | 28 | Tires | Number - Front / Rear | 2 / 2 | |
| | 29 | | Size - Front | 36 x 20 x 30 Poly | |
| | 30 | | Size - Rear | 28 x 12 x 22 Poly | |
| | 31 | Wheelbase | Distance in (mm) | 110 | 2,794 |
| | 32 | Tread | Center Of Tires - Front in (mm) | 50 | 1,270 |
| | 32A | | Center Of Tires - Rear in (mm) | 58 | 1,473 |
| | 33 | Ground Clearance | No Load At Lowest Point in (mm) | 4.75 | 121 |
| | 34 | Brakes | No Load At Center Of Wheelbase in (mm) | 7 | 178 |
| | 35 | | Service / Parking - Method Of Control | Foot / Hand | |
| | 36 | | Service / Parking - Method Of Operation | Air / Air | |
| POWER / TRANSMISSION | 37 | Battery | Volts / Ampere Hours (1 Battery) V/Ah | 12 / 1000 | |
| | 38 | Internal Combustion Engine | Make / Model | Cummins QSB6.7-C160 Tier III | |
| | 39 | | Output - Intermittent Per SAE Standards hp (kW) | 160 | 119 |
| | 40 | | Governed Speed - With Load rpm | 2200 | |
| | 41 | | Cycle / Number Of Cylinders / Displacement cu-in (L) | 4 / 6 / 409 | 4 / 6 / .7 |
| | 42 | Clutch | Type | Inching | |
| | 43 | Gear Change | Type | Hand | |
| | 44 | Transmission | Number Of Speeds - Forward / Reverse | 3 / 3 | |
| | 45 | | Type | Powershift | |
| | 46 | Relief Press. | For Attachments psi (bar) | 1500 | 103 |
| | 47 | | Width Across Counterweight in (mm) | 70 | 1,778 |
| | 48 | | Load Moment in-lbs (m-kg) | 2,460,000 | 28,343 |

† NOTE: Performance specifications are for trucks equipped as described on the back page of this specification sheet. Performance specifications are affected by the condition of the vehicle, its components, and the nature and condition of the operating area. If these specifications are critical, the proposed application should be discussed with your Taylor sales representative.

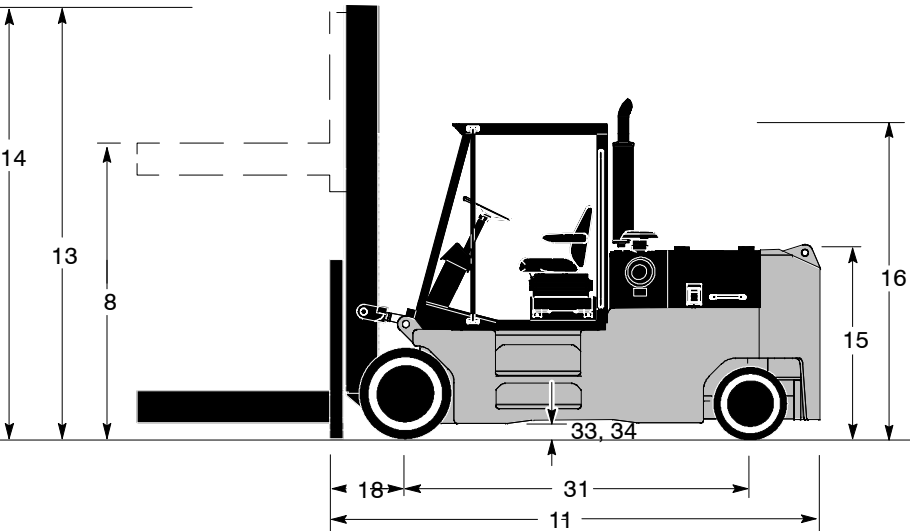
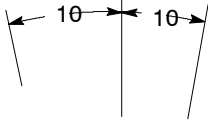
“Big Red” THC-500L



Engine

Cummins QSB6.7-C160 Tier III TPEM electronic turbocharged, charge air aftercooled (air to air) diesel, 6-cylinder diesel engine has 409 cu-in. (6.7 L) displacement. 4.09-in. (104 mm) bore x 5.2-in. (132 mm) stroke. Rated power of 160 (119 kW) horsepower at 2200 RPM. Maximum power of 165 horsepower (123 kW) at 2000 rpm. Peak torque 540 ft-lbs. (732 N-m) at 1400rpm. (SAE J1995 Conditions). Standard features are electronic diagnostic and maintenance monitor, fuel/water separator and engine/transmission protection systems, fuel economy, and reduced emissions. Emission certification: US EPA Tier III, Carb Tier III, EU Stage III.

The fuel tank capacity is 39 gallons (148 L).



“Big Red” THC-500L

Air Cleaner

Donaldson dry air cleaner with safety element and restriction indicator.

Cooling System

Extra large crossflow radiator for maximum efficiency; low profile hood. Wide fin spacing reduces dirt build-up and provides optimum engine cooling.

Electrical, Instrumentation, and Accessories

The one-piece instrument panel flips down for easy servicing and is pre-wired to accommodate heavy-duty accessories. All wiring is color coded.

The unit has a 12-volt electrical system. Standard equipment includes a key-type ignition system, heavy-duty battery, 100-amp alternator, reset circuit breakers, lighted instruments, horn, key switch- actuated amber strobe light, reverse-actuated warning alarm and tilt steering.

Gauges include fuel level, hourmeter, air pressure, engine coolant temperature, and hydraulic oil temperature.

Tier II engine electronic diagnostic light package.

Transmission

The three-speed, fully reversing, modulated, powershift transmission has inching, and electric roll shift control. Brakes behind inching. The filler pipe dipstick and large, heavy-duty, oil filter are easily accessible. Separate air-to-oil cooler.

Drive Axle

The heavy-duty, planetary, drive axle utilizes a hypoid ring gear and pinion.

Steer Axle

The steer axle is a single hydraulic cylinder design with heavy-duty links from the cylinder ram directly to tapered roller bearing mounted spindles.

Brake System

The 20.25-in. (514 mm) diameter x 5-in. (102 mm) wide S-cam air service brakes utilize a pedal to combine transmission inching / disconnect with brake actuation and a separate pedal for brake actuation. The spring applied parking brake is mounted on the transmission output shaft; the parking brake control is mounted on the instrument panel.

Power Steering

The fully hydrostatic steer-on-demand steering system provides constant response at all engine speeds.

Chassis

The all-welded frame has an integral counterweight. Large hinged doors provide easy access to the battery and other service points. The adjustable, suspension seat has an operator seat belt.

Hydraulic System

The hydraulic system utilizes an accumulator (in the lift circuit), dual wire-mesh strainers and a full-flow, 10-micron return-line filter with a replaceable element in the tank. Service capacity is 47 gallons (178 L).

The gear-type pump is transmission driven. Control valves are separate, stacked, and spool-type. The tilt lock valve prevents mast drift and torsional stress.

The stud-mounted lift cylinder has a chrome-plated rod and self-adjusting packing. Tilt cylinders also have chrome plated rods and self-adjusting packing, and are low-mounted for increased operator visibility. The standard dual pilot operated levers are conveniently located.

Mast, Carriage, and Rollers

The 70-in. (1,778mm) mast uprights and crossmembers are constructed of high-strength steel for minimum weight. The rigid direct lift mast has 65-in. (1,651 mm) of free lift provided by a telescopic lift cylinder. Lifting eyes are standard. The mast can be safely and easily removed.

Integral coil ram carriage.

The mast and carriage main rollers are common and use shielded roller bearings. The side rollers are adjustable to compensate for wear. All rollers can be relubricated for maximum life.

Coil Ram

12-in. (305 mm) outside diameter, 48-in. (1,219 mm) long and top of ram is 22-in. (559 mm) from ground.

This vehicle is certified to meet the applicable design and performance criteria required for Powered Industrial Trucks in OSHA Safety and Health Standards, Title 29 CFR, Part 1910.178, and the applicable design and performance requirements in ANSI B56.1 that were in effect at the time of manufacture. These standards also apply to the user and should be adhered to while operating this vehicle.

All specifications are subject to change without notice. Some operating data may be affected by the condition of the operating area. If these specifications are critical, contact the factory.